

Client Name: _____

Job #: _____

Customer Service Rep: _____



Contact for all suite cabinets:
arthur.campos@masterbrand.com
204-654-7856

Project: Concord-Dufferin Villa
Prefix: WIJ

KITCHEN CRAFT USER GUIDE – WINNIPEG

Thank-you for considering Kitchen Craft for your purchase. We are confident that you will enjoy your purchase for years to come. We stand behind our workmanship and the materials we provide. As a part of our commitment to you, we provide the following:

LIMITED WARRANTY

Our business has been built around the commitment to deliver quality service and products. Your Kitchen Craft order is covered by a one-year warranty on all *contracted work* from the original installation date. All cabinetry products are warranted to the original purchaser to be free from defects in material and workmanship for a period of **5** years, unless other specific warranties are noted herein. If the product is found defective upon inspection the part will be repaired or replaced without charge. The warranty covers only product manufactured by Kitchen Craft. If the warrantable product is no longer in production, an alternate solution will be sought with you. This warranty does not cover normal incidental deterioration such as nicks, scratches, abrasions, and natural aging, which result from normal wear and tear or abnormal use during the standard life of the product. *Labor and inspection costs will be charged if required.

Door hinges, drawer slides, aspen drawer boxes and aspen slide out trays carry a Lifetime Guarantee and will be replaced if failure occurs at anytime. This warranty does not cover normal incidental deterioration such as nicks, scratches, or abrasions that result from normal wear and tear or abnormal use during the standard life of the product.

Contact the Customer Service Representative for more information or to book an appointment with an authorized warranty agent.

204-661-6977

Some normal differences are to be expected between wooden or painted cabinet doors. Due to the natural factors in wood doors some differences in color, minor pin knots, mineral streaking and even small amounts of shrinking at miters and finger joints may occur. The specific details of the wood tolerances are available from the Sales Center or the Customer Service Division. A natural aging process of painted products can be a slight discoloration or darkening caused by normal conditions in a home. This slight discoloration is normally not covered by the warranty as the change is considered a natural aging process of painted products.

The Kitchen Craft Warranty will not cover the replacement of Thermofoil Doors exposed to extreme heat conditions, the use of heat shields is recommended. While operating stoves or ranges on *cleaning cycles* the extreme heat may cause damage to the Thermofoil Doors. *Manchester, Manchester Cathedral, Soho, Bristol, or Bristol Cathedral* are the “Thermofoil” door styles. It is recommended that during the cleaning cycle the range be pulled forward 6-8 inches and the lower range drawer be opened. (It should also be noted that it is recommended to set the feet of your range to allow the top edge of a “free standing range” to be approximately ¼” above the surface of your countertop.)

TOLERANCE

Due to the various types of materials we use, a 1/8” tolerance will be allowed with variance to cabinet specifications.

USE AND CARE OF YOUR KITCHEN CRAFT CABINETS

General: Use a very small amount of a mild detergent (i.e. dish detergent) mixed with clean water. Use a damp cloth to clean the cabinets and immediately dry with a soft clean (lint free) cloth. A small amount of non-silicone polish can be applied once a year to the doors and drawer fronts (wood) only. The interiors of the cabinets should be cleaned the same way but do not require polishing.

LAMINATE COUNTERTOPS

Laminate countertops are generally covered to be free from defects in materials and workmanship for a 1-year period, but are subject to a third party manufacturer’s warranty. The warranty will not cover normal incidental deterioration such as nicks, scratches, and **seam expansions which result from normal wear and tear or abnormal use during the standard life of the product.

Cleaning: Mix a small amount of mild detergent (i.e. dish detergent) in clean water and use a soft clean cloth to wipe the countertops. A soft clean cloth to dry will prevent streaks from showing on darker colors. Do not use paper towels to clean the laminate, as it is made from plastic and can scratch the surface of the counters. Also avoid use of abrasive or harsh cleaners, steel wool, and bleaches as these may scratch and/ or discolor the laminate. Do not use products like CLR that contain acid, alkali, or sodium hypochlorite (drain cleaners, oven cleaners etc.) they will damage the surface.

Protection: Hot Pots or appliances that have heating elements should be placed on an insulated pad or counter saver. Do not cut directly on the surface of the counters; use a cutting board to protect the knife from cutting the laminate surface.

If the counters require re-caulking due to settlement reseal with “Dapp” or silicone caulking, a paintable caulking is recommended. The drying or settling of a home will likely require re-caulking of the countertop, which is not covered by any manufacturer’s warranty.

****MITRES AND SEAMS can be damaged from water, standing water or even a damp cloth left sitting. This can cause the seam to absorb water and swell which is called “miter swell”. Swollen miters or raised seams caused by water or other liquid penetration are not covered under any manufacturer’s warranty. Please keep the miters and seams as dry as possible.**

SPECIALTY COUNTER TOPS

For information on the use and care of solid surface or granite countertops, please contact the certified installer chosen for your project. The Kitchen Craft Warranty does not cover products that are not manufactured by Kitchen Craft. The use and care of these products should come from the supplier/ manufacturer. Insist that your sales representative provides you the contact person for these products.

EXTERNALLY PURCHASED PRODUCTS

Externally purchased products such as flooring, tile, sinks, accessories, laminate and non-laminate countertops that are provided as part of this contract, are covered by specific third party warranties and are not part of this warranty.

RENOVATION

Renovation carpentry, drywall, plumbing and electrical work supplied as part of this contract are warranted for a period of one-year from the date of completion.

VALIDATION OF WARRANTY

This warranty is effective upon full payment of the contract price.

DOOR ADJUSTMENTS

Kitchen Craft cabinets are manufactured with a special hinge and plate that allows a six-way adjustment, the plate is slotted and by loosening the gable screws the door can slide up or down. The two screws on the hinge move the door in and out as well as up and down. Simply try moving the screws slightly so you can see the properties of the hinge adjustment. If you have problems see the following page for a visual diagram or visit a Kitchen Craft dealer or showroom.

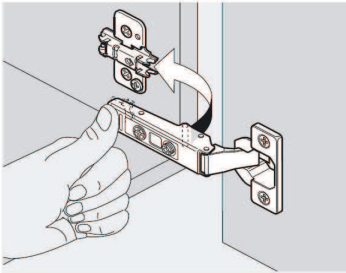
Door adjustments are not covered under the one-year labor or the 5-year warranty as they are normally due to the drying or the settlement of a home.

***LIMITED WARRANTY**

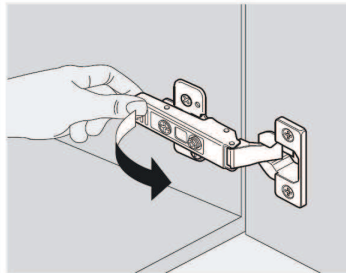
This warranty is limited to parts only. It does not cover cost of labor and delivery.

Thank-you for reviewing this information, it is intended to help you maintain and enjoy your purchase.

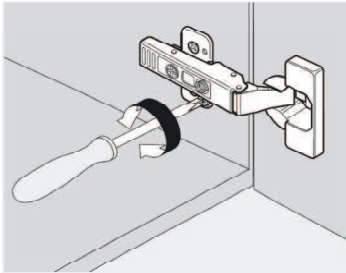
CLIP ON HINGE



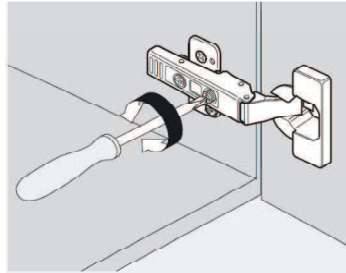
Assembly



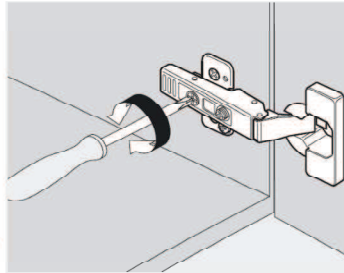
Removal



Height adjustment



Side adjustment



Depth adjustment

HARDWOOD DRAWER BOX

- A. **Vertical Adjustment Slide front of box:**
Move the vertical adjustment slide attached to the release mechanism at front of drawer.

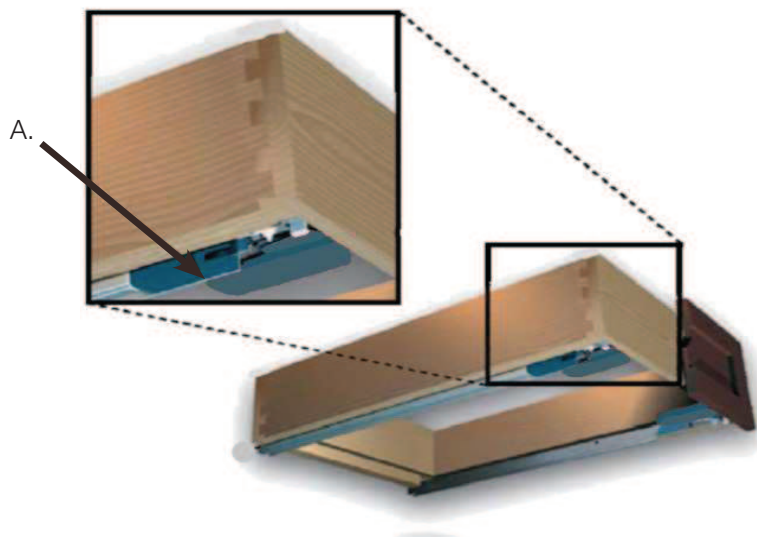
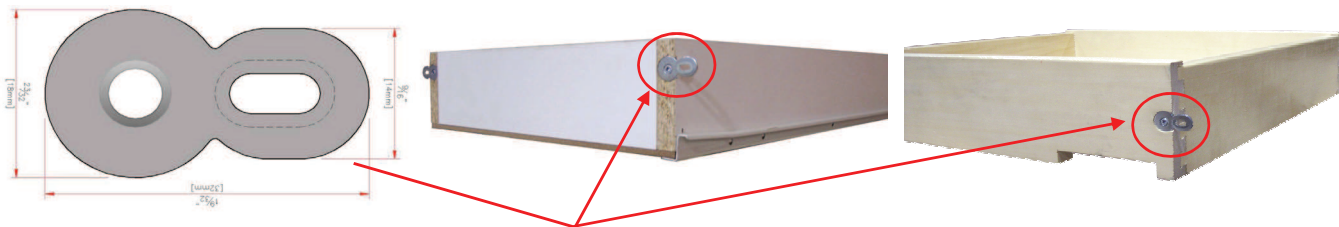
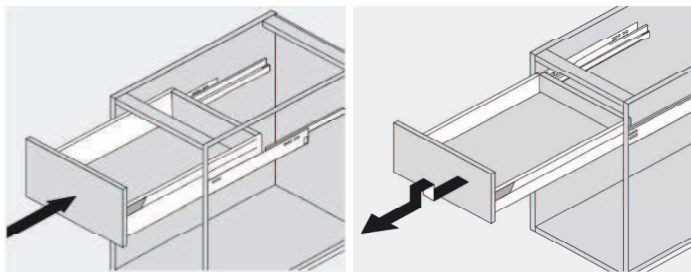


FIGURE 8 CLIP ADJUSTMENT (MELAMINE & HARDWOOD)

Melamine and Hardwood drawer boxes are attached with figure 8 clips. The oval shaped slot allows for adjustment of the drawer front. Screw needs to be loosened and front is manually adjusted.

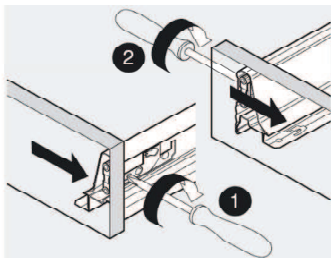


METAL DRAWER ADJUSTMENT

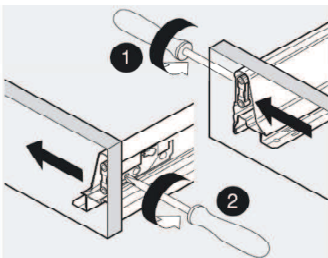


Installation

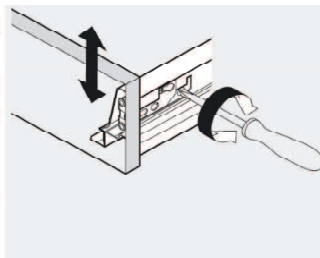
Removal



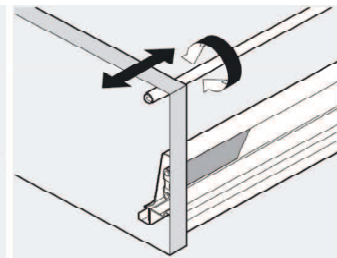
Side adjustment: to the right 1 mm



Side adjustment: to the left 1 mm



Height adjustment: ± 2 mm



Tilt adjustment